

MOSAICS NEW ENGLAND

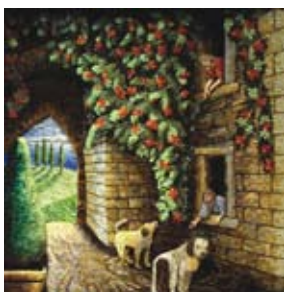
www.MosaicsNewEngland.com



Cynthia Fisher (Charlemont, MA)
Pavement Fractals



Michelle Eckhart (Middletown, RI)
Pepper



Shawn Newton (Wallingford, CT)
Leftovers



Lauri Richardson (Williamsville, VT)
Retreat



Colette Shumate-Smith (Leominster, MA)
Should we have let sleeping dogs lie?

FOR IMMEDIATE RELEASE:

Contact: Margaret Ryan
617-894-2644
margaret@MosaicsNewEngland.com

The Art of Mosaic 2009 at the Somerville Museum: September 10 – October 31 New England mosaic artists assemble this fall in Somerville for the area's most significant exhibition of contemporary Mosaic Art.

The Somerville Museum is host to The Art of Mosaic 2009, an exhibition of contemporary mosaic art created by artists from the six New England states. The exhibition includes examples of fine art pieces as well as decorative and functional art objects.

Prizes awarded for the best entries include:

Best in Show: Cynthia Fisher (Charlemont, MA) for *Pavement Fractals*
Michelle Eckhart (Middletown, RI) for *Pepper*

Jurors' Choice: Shawn Newton (Wallingford, CT) for *Leftovers*
Lauri Richardson (Williamsville, VT) for *Retreat*
Colette Shumate-Smith (Leominster, MA) for *Should we have let sleeping dogs lie?*

"Mosaic artists push the medium in new directions manipulating traditional and modern materials to make statements

that engage, provoke, and delight the eye, the mind and the sense of touch,” says Margaret Ryan, one of the curators of the exhibition.

On each Saturday afternoon during the course of the exhibition, visitors can see artists in action creating mosaics with a variety of materials including marble, glass, Venetian smalti, broken plates, and found objects. Two lectures on Roman era mosaic will be presented by Kathleen Coleman, Harvard University (September 24, 7 p.m.) and Paula Artal-Isbrand, Objects Conservator at the Worcester Art Museum (October 8, 7 p.m.).

The Somerville Central Library (79 Highland Ave., Somerville) hosts double feature films about mosaic artists Antonio Gaudi and Emile Norman: Monday, September 14, 6:30 p.m., Saturday, October 3, 2 p.m., and Wednesday, October 28, 6:30 pm.

These events as well as the exhibition are free and open to the public.

Award winning and acclaimed mosaic artists Lynne Chinn (Plano, Texas), Sophie Drouin (Kitchener, Ontario), and Nancie Mills Pipgras (Sacramento, California) will join local artists Bill Buckingham (Wakefield, Massachusetts) and Pam Stratton (Rockport, Massachusetts) to teach a series of Master Classes in mosaic art for beginners as well as professional mosaic artists. Registration is required for these classes.

A full description of the exhibition’s events and directions to the Somerville Museum can be found on the exhibition website: www.MosaicsNewEngland.com

The exhibition will run from Thursday, September 10 through Saturday, October 31 at the Somerville Museum, #1 Westwood Rd, Somerville, 02143, 617-666-9810, www.SomervilleMuseum.org
Hours: Thursday 2-7 p.m., Friday 2-5 p.m., Saturday 12-5 p.m., Sunday 2-5 p.m.

For information on the exhibition and associated events: [**www.MosaicsNewEngland.com**](http://www.MosaicsNewEngland.com)